

**OWNER & SUBDIVIDER:**  
**CARL AARUP**  
 MECHANISBURG ROAD  
 BUFFALO, ILLINOIS

**WEST ROAD PARK**

All of the SW 1/4 of the SW 1/4 of Section 1, Township 15 North, Range 6 West of the 3rd Principal Meridian except the West 24.5 feet thereof, more particularly described as follows.

Commencing at a found stone at the SW corner, SW 1/4, SW 1/4, Section 1; thence S. 65° 36' 20" E, measure 214.50 feet to a set iron pin, said pin being the point of beginning; thence N. 01° 53' W, 1322.86 feet to a set iron pin, said pin being on the North line SW 1/4, SW 1/4; thence S. 65° 40' 53" E, 1127.57 feet along the North line of said SW 1/4, SW 1/4 to a set iron pin, said pin being the NE corner SW 1/4, SW 1/4; thence S. 00° 00' W, 1324.55 feet along the East line of said SW 1/4, SW 1/4 to a set iron pin, said pin being the SE corner SW 1/4, SW 1/4; thence N. 05° 36' 20" W, 1126.83 feet along the South line SW 1/4, SW 1/4 to the point of beginning. Containing 34.250 acres more or less.

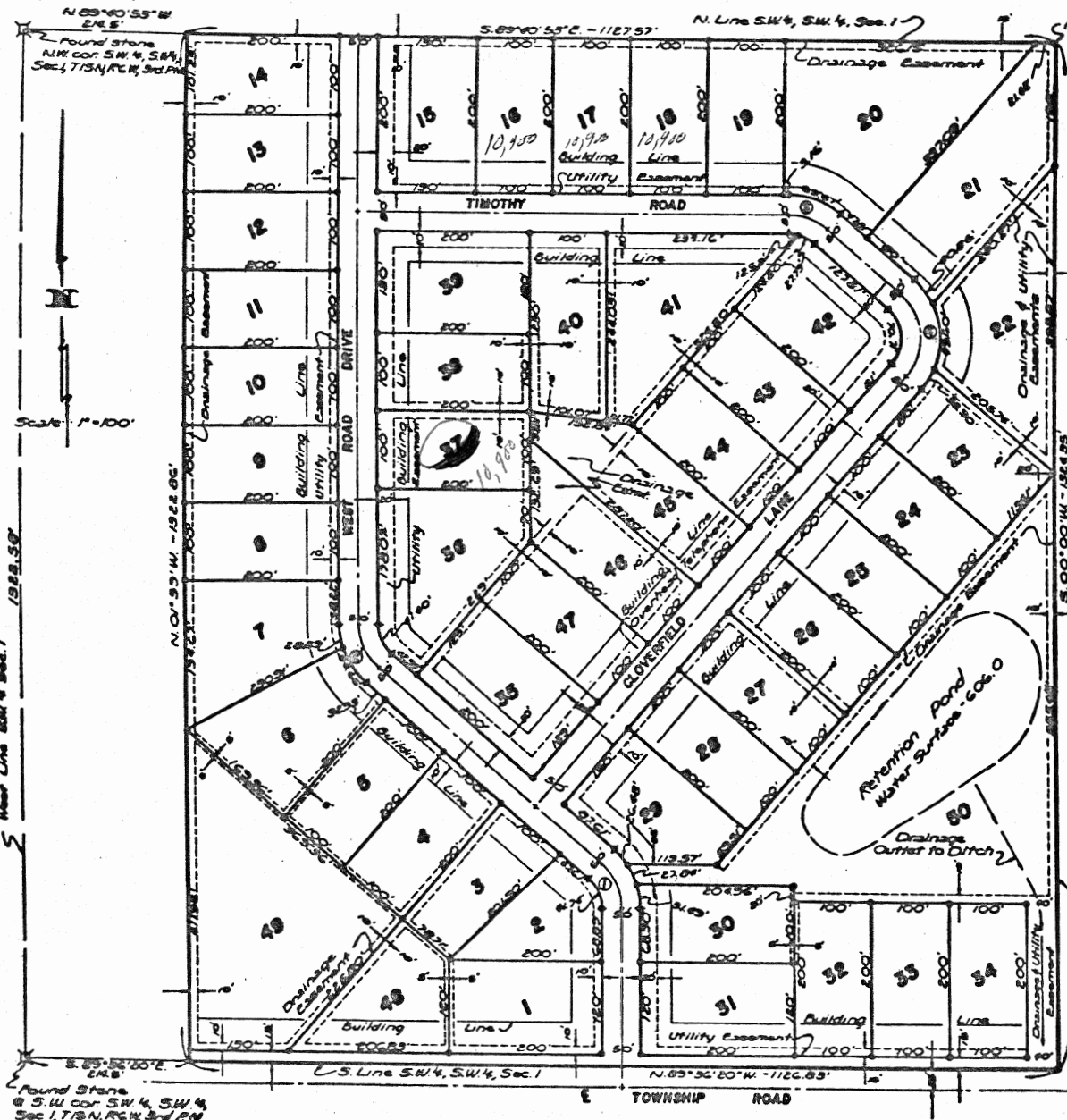
**GENERAL NOTES:**

- 1- All lot corners, angle points, points of curvature are monumented with 1/2" x 30" iron pins.
- 2- Chord distances are shown on curves unless otherwise indicated.
- 3- Easements are for drainage and public utilities.
- 4- All building setback lines are 40' unless otherwise indicated.
- 5- Lot 50 to be used for drainage retention and subdivision association use.

I hereby certify that the accompanying plat correctly represents the results of a survey made under my direction.

I further certify that no part of the property covered by this plat or subdivision is situated within 500 feet of a surface drain or watercourse serving a tributary area of 640 acres or more.

*Thomas E. Bartolucci* Aug 8, 1976  
 ILLINOIS LAND SURVEYOR No. 1206



CURVE DATA					
Δ	D	R	T	L	
1	0° 12' 23"	76.25' 40"	75.00'	54.85'	64.55'
2	68° 54' 44"	76.25' 40"	75.00'	56.11'	64.03'
3	40° 44' 10"	76.25' 40"	75.00'	27.04'	99.58'
4	90° 00' 00"	76.25' 40"	75.00'	75.00'	117.81'

Date \_\_\_\_\_  
 Approved \_\_\_\_\_  
 Witness \_\_\_\_\_

**Arch, Civil, and Mechanical**

DATE: 5-28-76 JOB NO: 75-97 SHEET NO: 1